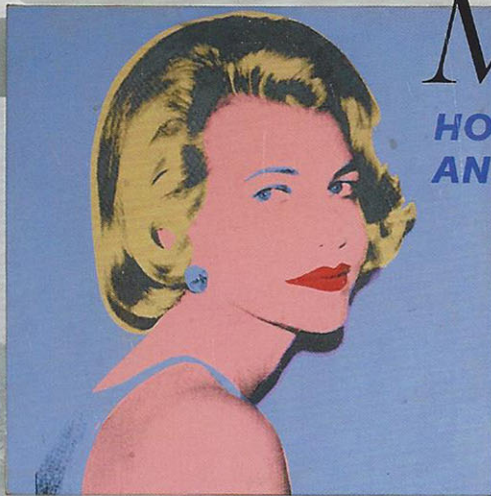
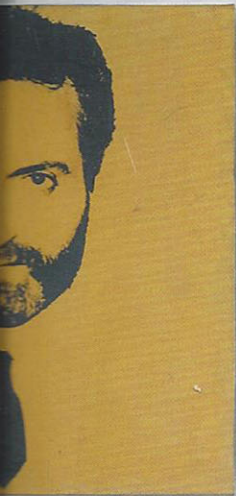


# ELLE DECOR

FRESHEN  
UP!

## BOLD + BEAUTIFUL MAKEOVERS

HOUSTON, PALM BEACH, PARIS,  
AND MORE



MARCH 2015  
\$5.99  
ELLEDECOR.COM



**TABLE LAMPS,  
TILES, TEXTILES...**  
ELEGANT UPDATES FOR  
EVERY ROOM

In the living room of Jonathan and Lizzie Tisch's Palm Beach apartment, which was designed by Timothy Haynes and Kevin Roberts, a pair of silk-screened prints by Andy Warhol hang above a 1960s Edward Wormley sofa upholstered in a Scalamandrè velvet. The chairs in the foreground are by Charles Ramos, and the side table is by Achille Salvagni; the Louis XVI stools, circa 1780, are from Bernd Goeckler Antiques, the Lucite barstools are from the 1970s, and the bear sculpture is by Paola Pivi. See Resources.



The dining room chairs include two originals by Maison Leleu, from Maison Gerard, as well as reproductions, all covered in a nubuck from Cortina Leathers; the resin-top table is a custom design, the painting is by Christian Marclay, and five Italian pendants form a single light fixture. **FACING PAGE, FROM TOP:** In the media room, the sofas are by Edward Wormley and 1970s armchairs by Harvey Probbler are covered in a Holly Hunt cotton velvet. A pair of 1953 chairs by Pierre Guariche upholstered in a Knoll Textiles fabric and a 1970 desk by Maurice Calka in the sitting room; the bookshelves and the rug by Beauvais Carpets are custom designs. See Resources.





The designers favored pale finishes. “We used neutrals to offset that punchy color,” Roberts says. The intense sheen of the walls—some glass, others lacquered—shows both furniture and art to advantage, including an outsize pink polar bear by Paola Pivi.

There were many design adventures. Lizzie initially wanted a bright pink rug for the living room. The designers (“a little horrified,” Roberts confesses) suggested “a sort of fading out of color” instead. The result is a stunning 900-square-foot rug of solid silk shag, raspberry-hued at the edges and fading to white at the center. “That rug was a narrative we had to follow,” Jon insists. Vintage barrel-back chairs by Harvey Probbler in the media room are mustard—“such a 1970s color!” Roberts exclaims.

Here, as elsewhere, the designers’ inventiveness is apparent. They solved the problem of a cavernous dining room that overlooks the water (Lake Worth Lagoon to the west, the Atlantic to the east) by suspending five Italian hanging lamps at different heights—creating a single, linear light fixture. The custom-made resin dining table, with its crackled-looking surface (created by zapping the material with an electric current), beautifully reflects the light.

The palette calms in the master bedroom. The prevailing hue is subtlety itself—a hint of shimmering blue seems to rise from the water below. The Lucite headboard was Jon’s idea. “It’s so peaceful and serene, high above the water,” he says. “You feel like you’re on a boat.” A craft of crisp, cutting-edge style, of course. ■